
Weight Change in Schizophrenia: Weight Task Force Presentation

Bruce J. Kinon, M.D.

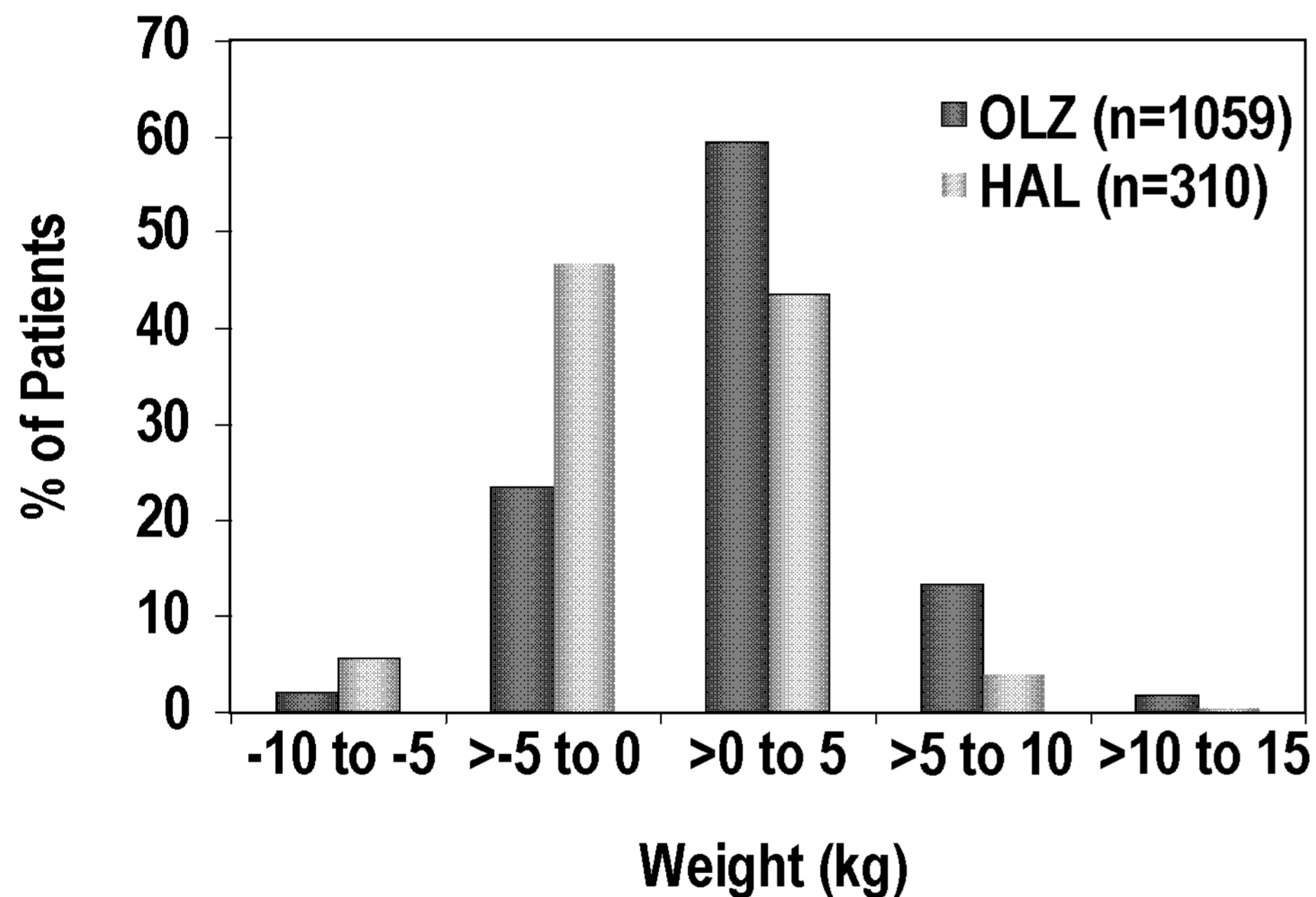
December 1, 2003

The Lilly logo is written in a black, cursive script font.

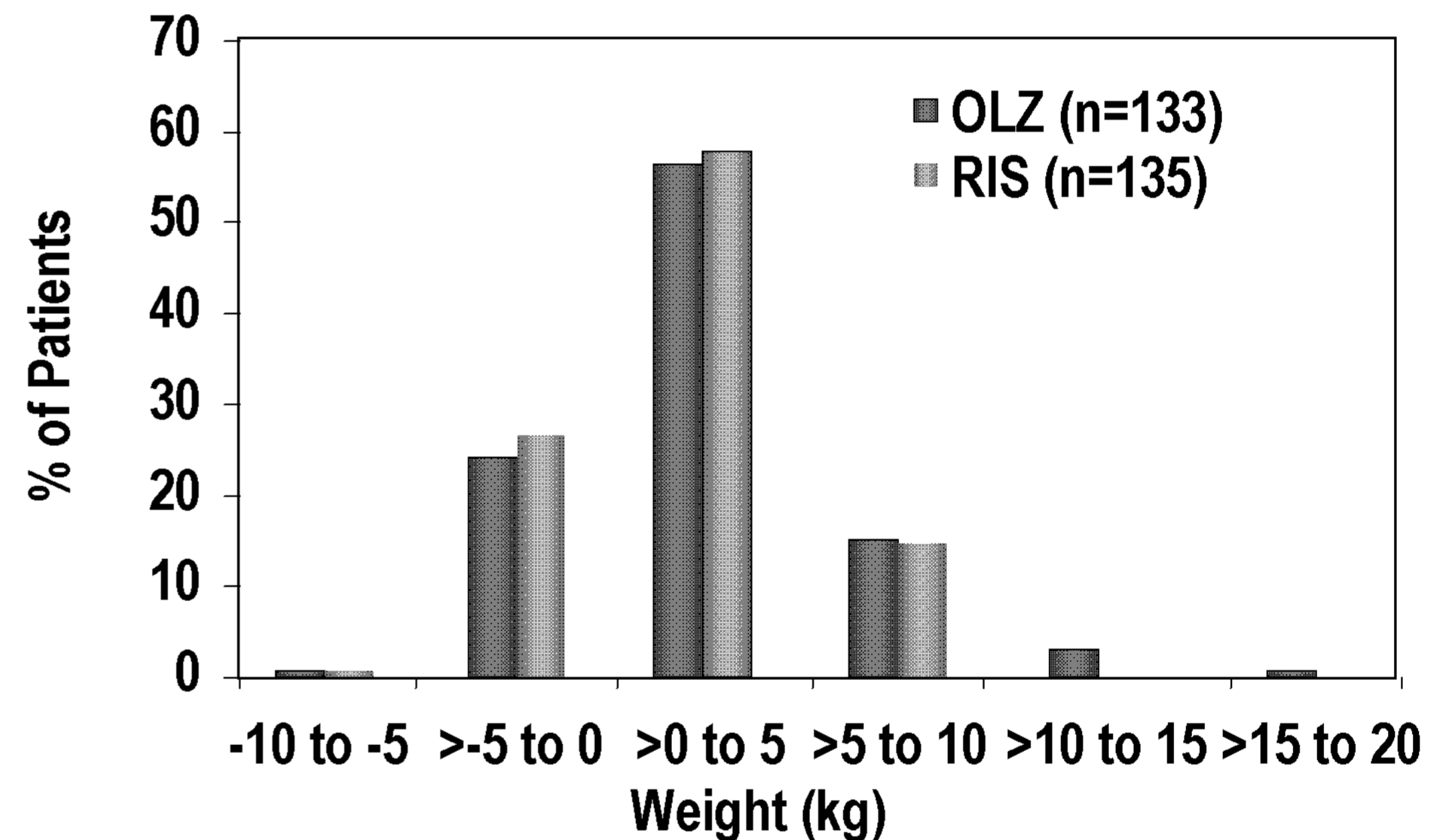
Answers That Matter.

Interindividual Variability in Weight Gain in 2 Studies in Patients With Schizophrenia

Mean Weight Change for OLZ and HAL
HGAJ: 6 Weeks



Mean Weight Change for OLZ and RIS
HGBG: 6 Weeks



Basson BR, et al. *J Clin Psychiatry*. 2001;62(4):231-238.

Predictors of Weight Gain in Decreasing Order of Importance

◆ Olanzapine-Haloperidol Comparison

- 1. OLZ vs HAL*
- 2. Increased appetite vs normal appetite*
- 3. Non-Caucasion vs Caucasion*
- 4. Low vs high BBMI*
- 5. Male vs female*
- 6. Better vs poorer outcome*
- 7. Young vs old
- 8. High vs low dose

◆ Olanzapine-Risperidone Comparison

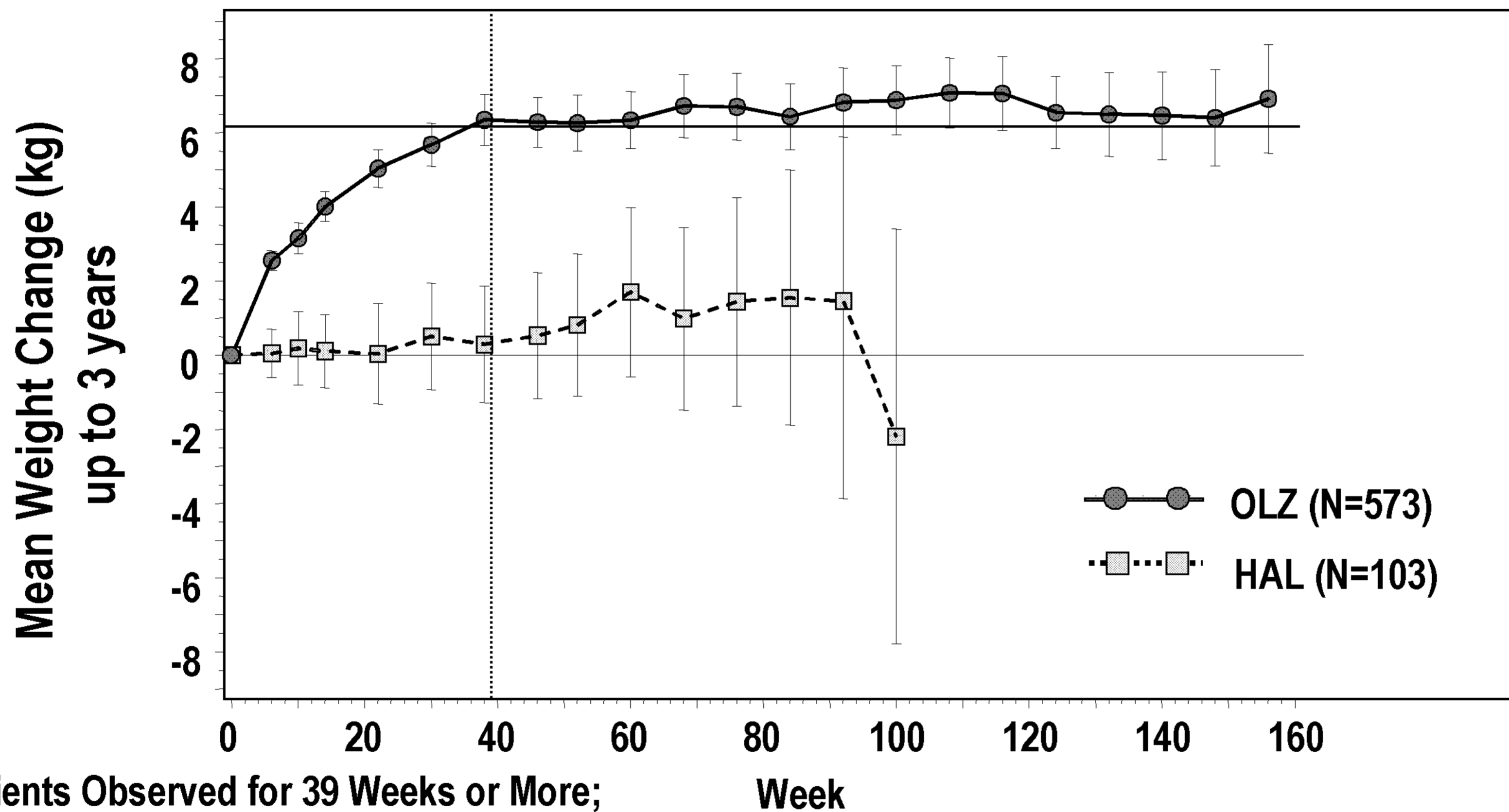
- 1. Better vs poorer* outcome
- 2. Young vs old*
- 3. Low vs high BBMI*
- 4. Male vs female
- 5. Non-Caucasian vs Caucasian
- 6. Increased vs normal appetite
- 7. OLZ vs RIS
- 8. High vs low dose

*p<.05.

Basson BR, et al. *J Clin Psychiatry*. 2001;62(4):231-238.

Olanzapine-Associated Weight Gain Plateaus After First 39 Weeks of Treatment

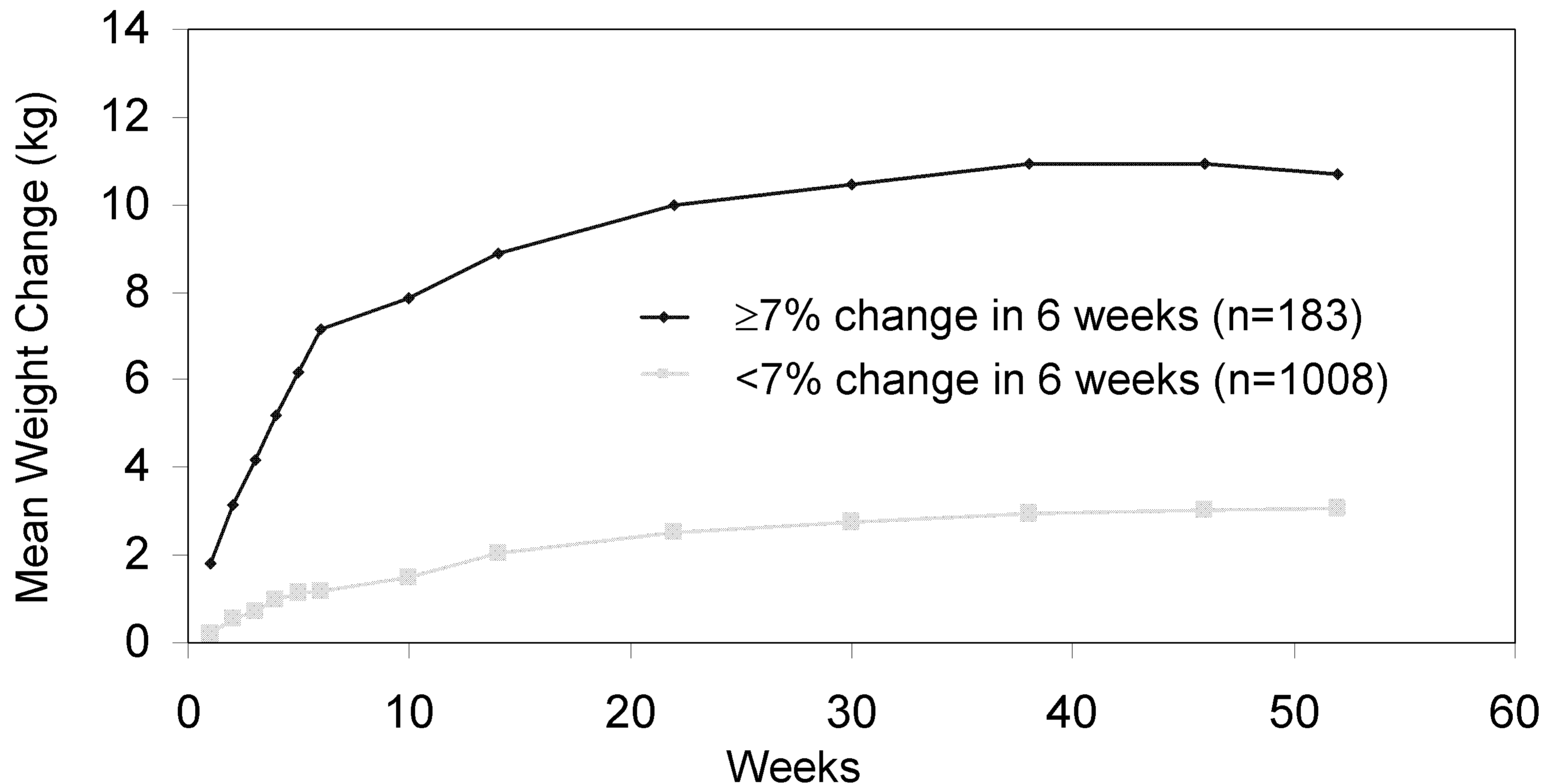
Median = 2.5 Years



Patients Observed for 39 Weeks or More;
Double-blind and open-label olanzapine.

Kinon BJ, et al. *J Clin Psychiatry*. 2001;62:92-100.

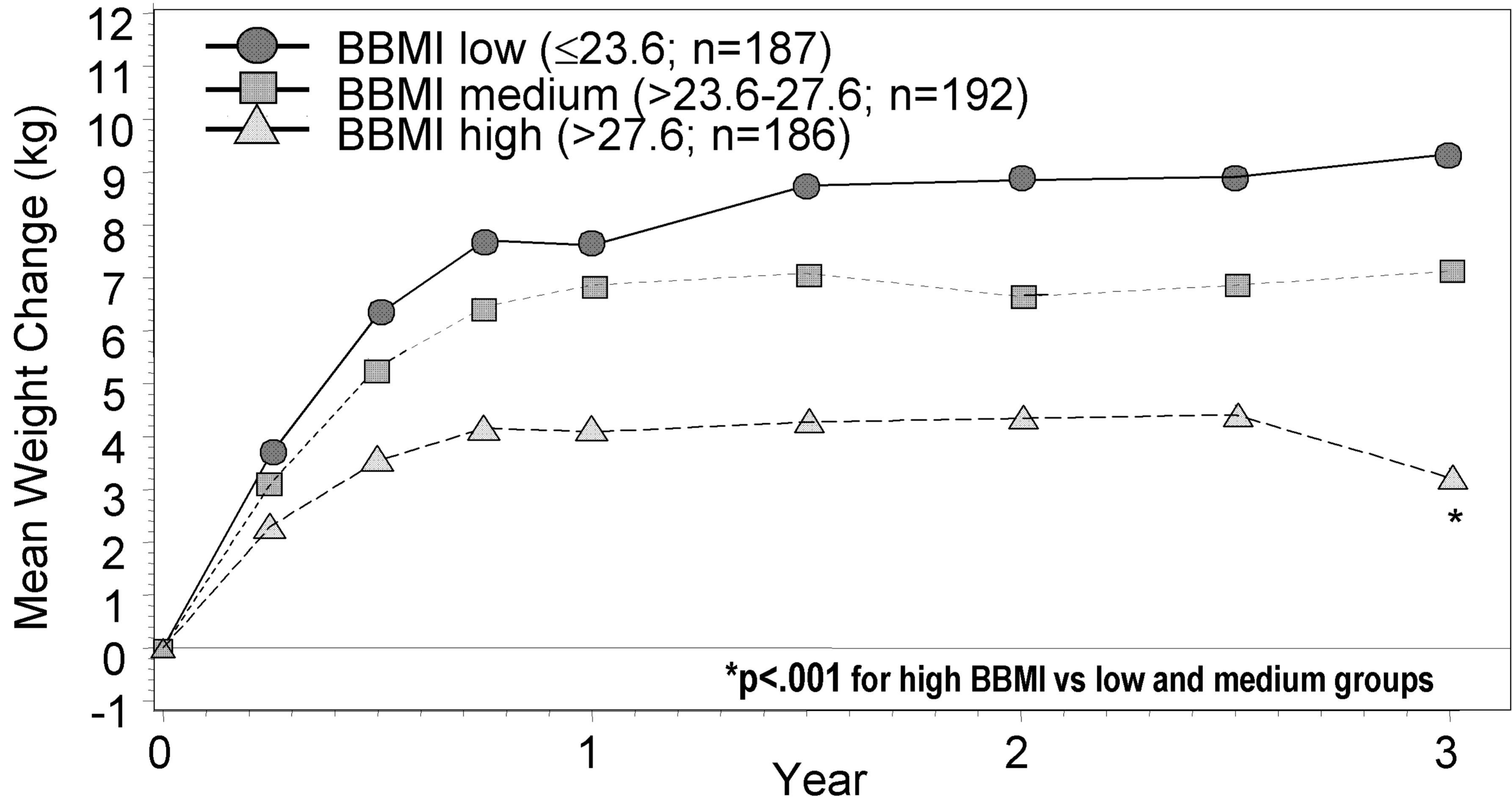
Early Identification of Patients at Risk for Substantial Weight Gain on Olanzapine*



*N=1191, LOCF.

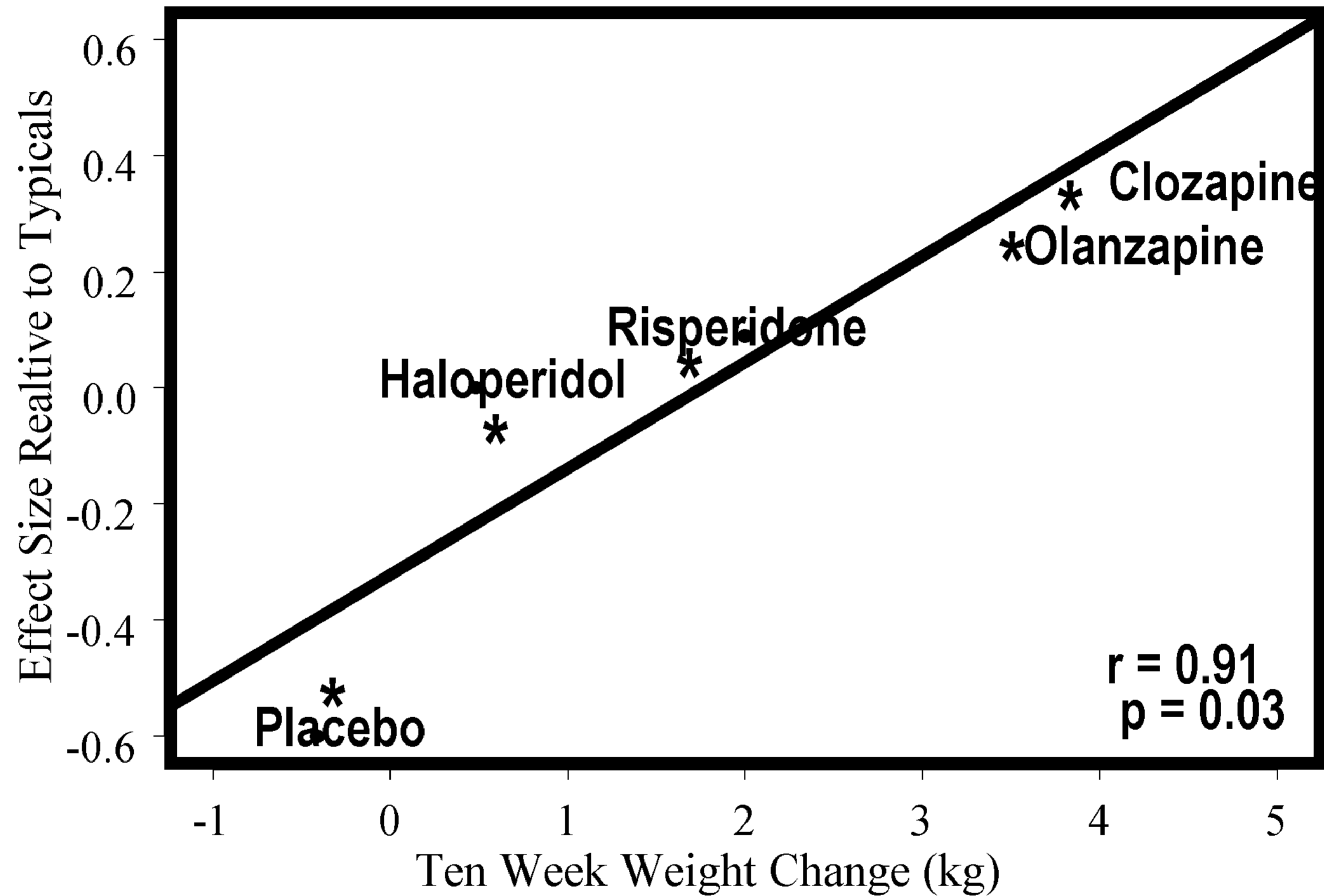
Kinon BJ, et al. Presented at: APA Annual Meeting; May 17-22, 2003; San Francisco, Calif.

Patients With Higher Baseline Body Mass Index (BBMI) Experienced Less Weight Gain



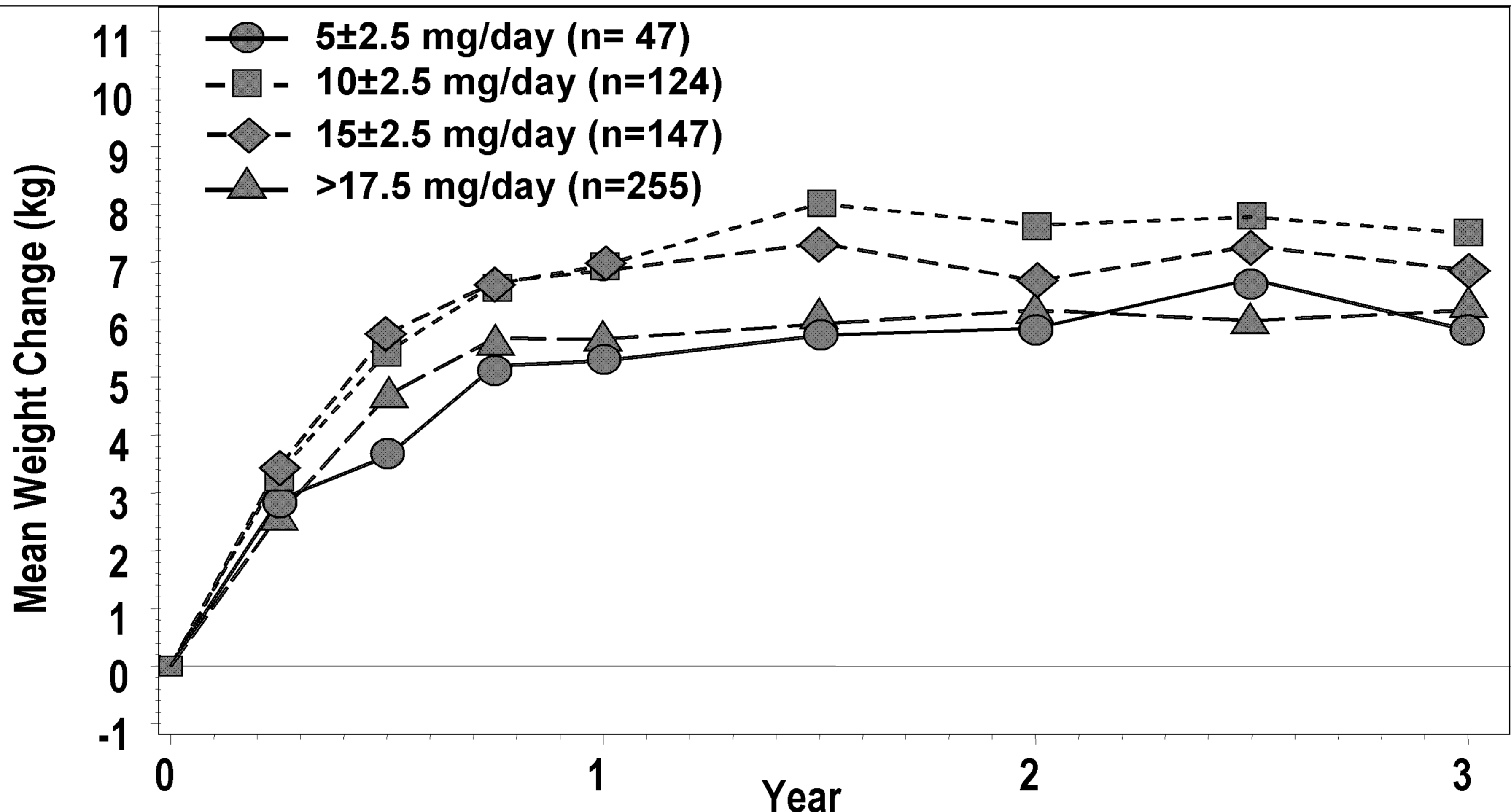
Kinon BJ, et al. *J Clin Psychiatry*. 2001;62(2):92-100.

The Correlation Between Therapeutic Effect Size and Treatment-Emergent Weight Gain For Patients with Schizophrenia*



* Therapeutic effect size as reported in Cochrane's meta-analytical reviews²³⁻²⁶ of the efficacy of atypical antipsychotics compared with first generation antipsychotics. The magnitude of the typical 10-week weight gain experienced by patients treated with clozapine, olanzapine, risperidone, and haloperidol, as reported in Allison et al, 1999²⁷. Effect size for placebo as reported in Davis et al, 2003²⁸. Magnitude of placebo weight gain was obtained from the current study because typical weight gain on placebo was not previously reported.

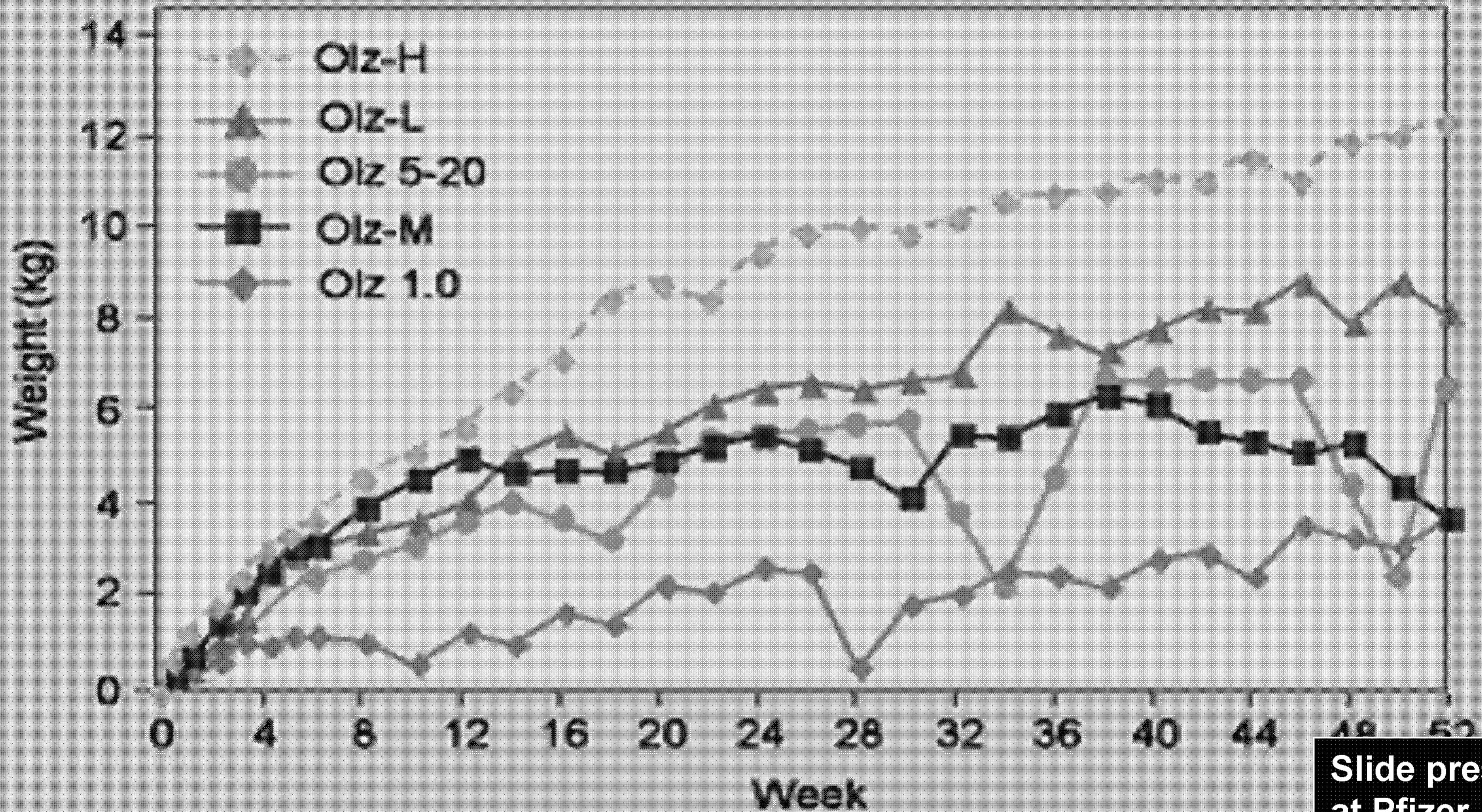
Olanzapine Maintenance Dose Did Not Predict Weight Changes



No significant differences between mean olanzapine daily dose categories over the entire study period.

Kinon BJ, et al. *J Clin Psychiatry*. 2001;62:92-100.

Olanzapine Weight Gain Over 1 Year



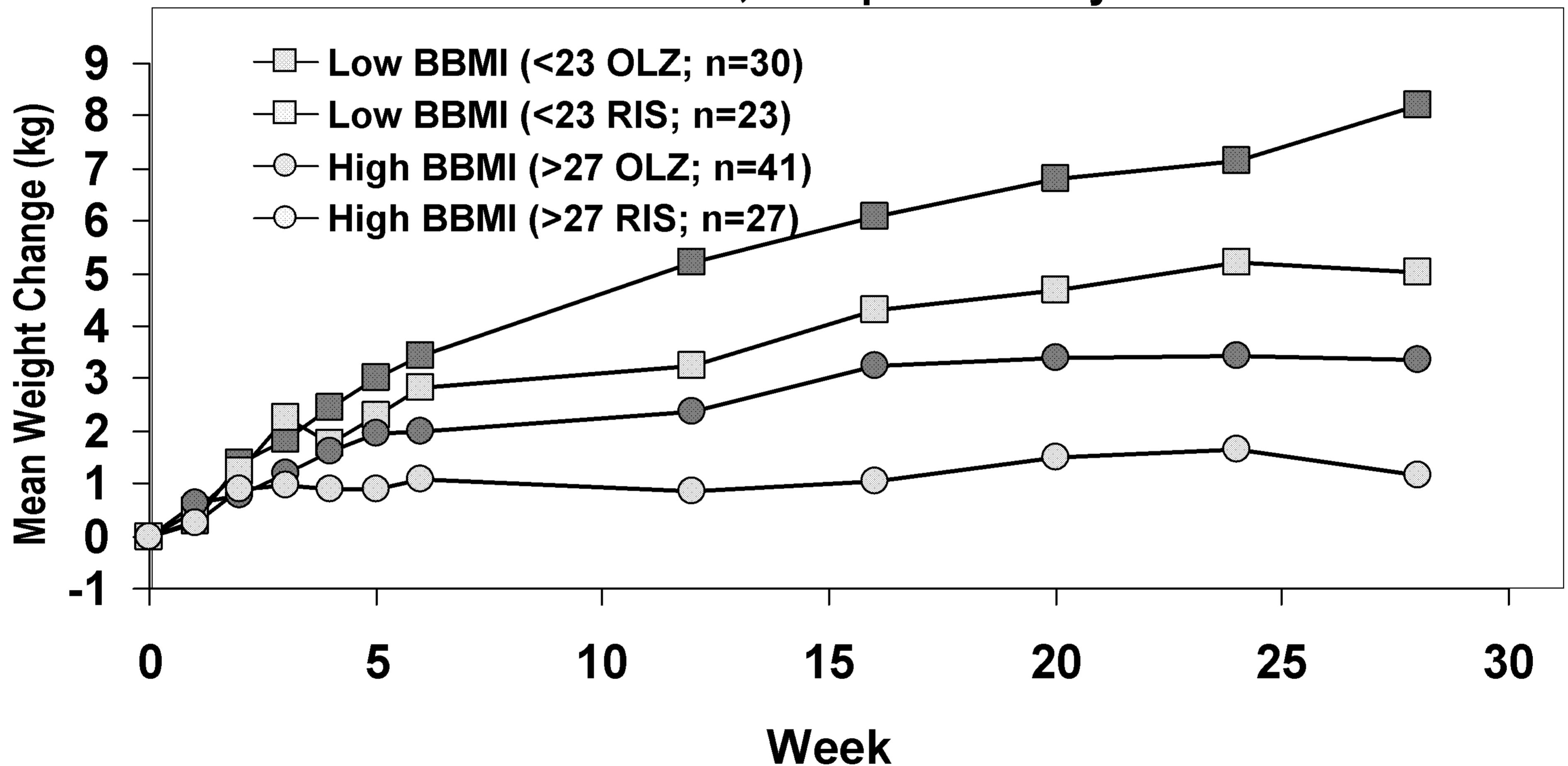
Olz = olanzapine.

Beasley CM Jr. *J Clin Psychiatry*. Monograph. 1997;15:19-21.

Slide presented
at Pfizer
sponsored CME
by Henry
Nasrallah

Higher Baseline Body Mass Index (BBMI) Causes Less Weight Gain in Patients on Olanzapine or Risperidone

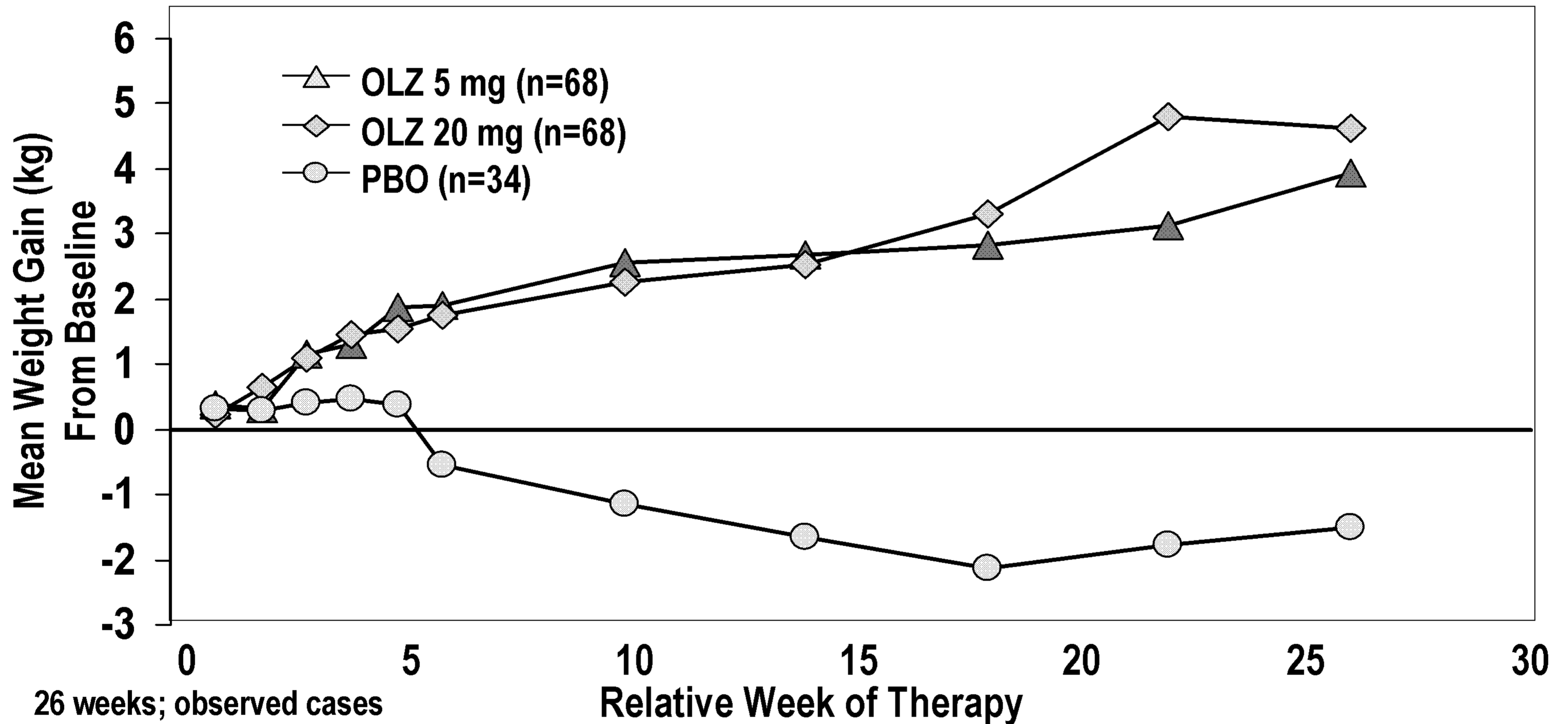
28 Weeks; Completers Only



Data on file, Eli Lilly and Company. 2000.

Olanzapine Starting Dose Has No Significant Effect on Weight Gain

Effect of Starting Dose on Weight Change



Data on file, Eli Lilly and Company. 2000.